

# i-Mariner Chart Plotter and e-Nav Display

## Multifunction Display with Online Service Support

i-ais-LCD10 e-Nav display delivers easy-to-use interface and rich set of navigation functions to mariners. Device comes with a 10.1 multi-touch color display that provides easy zoom in-out and pan operation during sailing.

i-ais-LCD10 is compatible with all i-Marine transponders thus gives ability to present surrounding AIS targets and other AIS objects on electronic navigation charts.



- Worldwide, standard, S57 and S57 based encrypted i-Marine SENC vector chart support
- OpenGL supported enhanced 2D drawing engine for maximum performance on modern hardware
- North-up, course-up and chart-up display modes
- Waypoint navigation
- Route navigation with ship tracking functions
- NMEA 0183 interface for AIS transponder connection
- SAR messages generation and transmission using i-ais-TBCS transponder
- Touch screen optimized user interface for easy-to-use by mariners
- AIS support for SART with selectable MMSI for automatic MOB handling
- Ready for Turkish AIS Utilization
- Websocket based data service support

i-ais-LCD10

### GENERAL

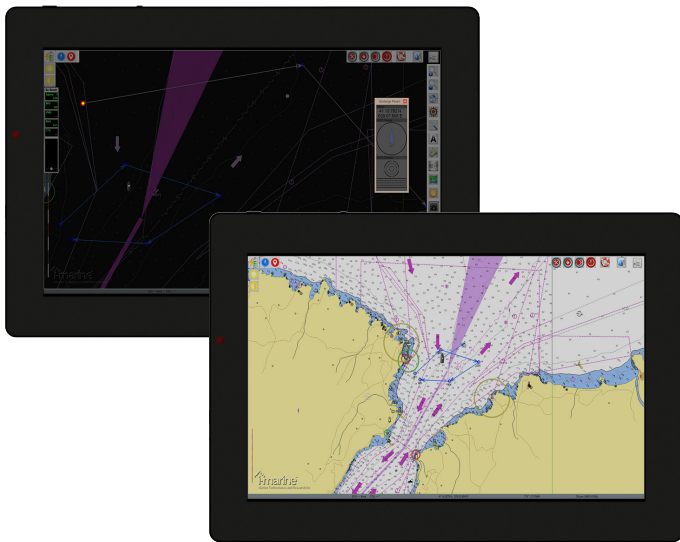
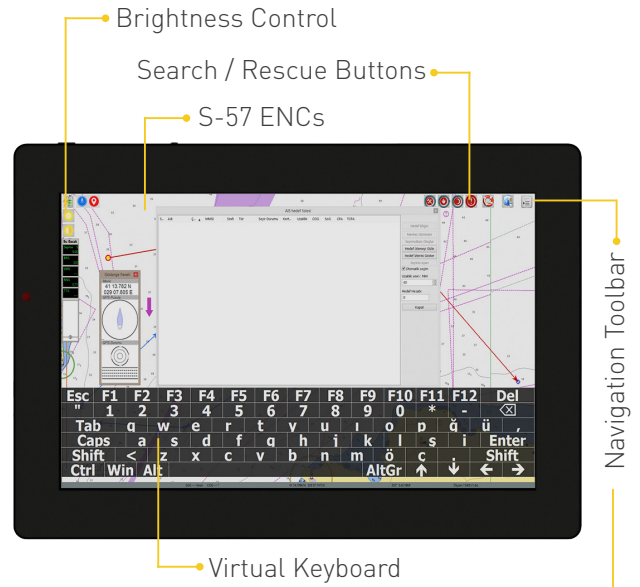
- > Display Type            Multi-Touch Screen
- > Display Size            10.1"
- > Resolution              1280 x 800
- > Aspect Ratio            16 : 10
- > WLAN                    Wi-Fi
- > Connectivity            3G (optional)
- > Expansion              AIS Receiver (optional)
- > Mounting                Mini VESA compatible
- > Power                    12 VDC
- > Software                i-Mariner 1.x

### FEATURES

- > Touch-screen keyboard for data input
- > NMEA 0183 connection
- > Search & Rescue Functions
- > Durable metal housing
- > Over-the-Air (OTA) Software Update
- > Point to Point / Point to Multi-Point Messaging
- > Built-in battery with min. 2 hours operation time

### DIMENSIONS

- > Width                    300 mm
- > Length                  200 mm
- > Depth                    20 mm



Day / Night View Modes

- Zoom in
- Zoom out
- Create Route
- Auto Follow
- Settings
- Show ENC Text
- Show AIS targets
- Route Manager
- Toggle Tracking
- Change Color Tone

AUTHORIZED DEALER

Technical specifications are subject to change without prior notice.